

Self-evaluation Summary Dashboard

Produce custom dashboards at www.ftaspire.org

St Augustine's Catholic High School

LA Worcestershire DFE 8855400 Produced September 2018

Reports

- Overview
- Attainment & Progress
- Pupil groups
- Subjects
- Disadvantaged pupils
- Scatterplot
- Context

What it tells you

- What are the strengths and weaknesses of your school?
- How does attainment and pupil progress at your school compare to the national average?
- How are you performing in different subjects?
- Do you have any under-performing groups of pupils?
- How might the context of your school affect performance?
- How does pupil attendance compare to the national average?

About the data shown



Filters

No filters chosen (all pupils included)
You can use filters to view a subset of pupils



Indicators

Attainment / Progress 8 (Overall)
% English & Maths (Grade 4+)



Value added

Achievement is compared with similar pupils nationally. The FFT VA model uses prior attainment, gender and month of birth as a starting point.

Overview

KS4 Attainment 2017 · Actual results

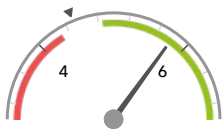
199 pupils

KS4 Progress 2017 · Value Added

198 matched pupils

Attainment 8 (Overall)

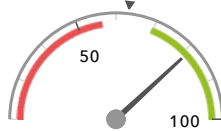
5.8 + ↑



Significantly above the national average (4.5) ◀

% English & Maths (Grade 4+)

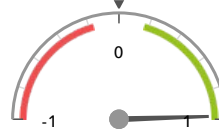
81% +



Significantly above the national average (63%) ◀

Progress 8 (Overall)

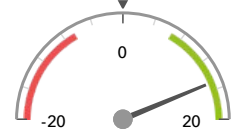
+0.98 +



Significantly above the national average (0) ◀

% English & Maths (Grade 4+)

+15% +



Significantly above the national average (0%) ◀

KS4 higher and lower performing pupil groups 2017

	Higher performing	Lower performing
Overall achievement pupil progress	First language not English (28) + Summer Term (76) + Female (108) +	
English pupil progress	Female (108) + First language not English (28) + Lower attainers (59) +	
Mathematics pupil progress	First language not English (28) + Summer Term (76) + Pakistani (13) +	
Subjects pupil progress	Engineering Studies Non-GCSE (35) + ↓ Chemistry GCSE (29) + ↑ Physics GCSE (29) + D&T Product Design GCSE (25) + Physical Education/Sport Studies GCSE (32) +	Psychology GCSE (27) ↓ German GCSE (43) Health & Social Care Non-GCSE (26) Applied Info Tech Non-GCSE (46) Media/Film/Tv Studies GCSE (18)

Attainment & progress

KS4 Attainment 2017

199 pupils

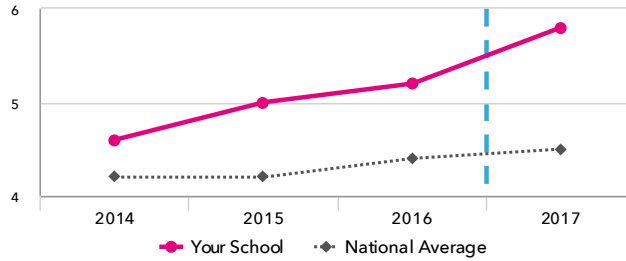
Attainment 8 (Overall)

5.8 + ↑

FFT Rank



Significantly above the national average (4.5)



KS4 Progress 2017

198 matched pupils

Progress 8 (Overall)

+0.98 +

FFT Rank



Significantly above the national average (0)

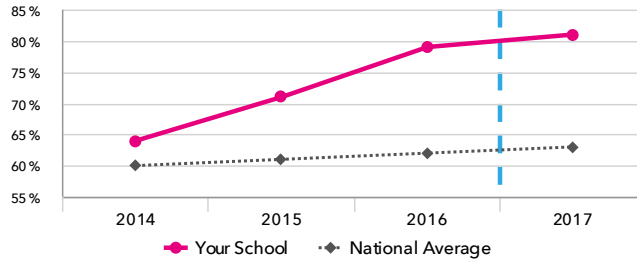
% English & Maths (Grade 4+)

81% +

FFT Rank



Significantly above the national average (63%)



% English & Maths (Grade 4+)

+15% +

FFT Rank



Significantly above the national average (0%)

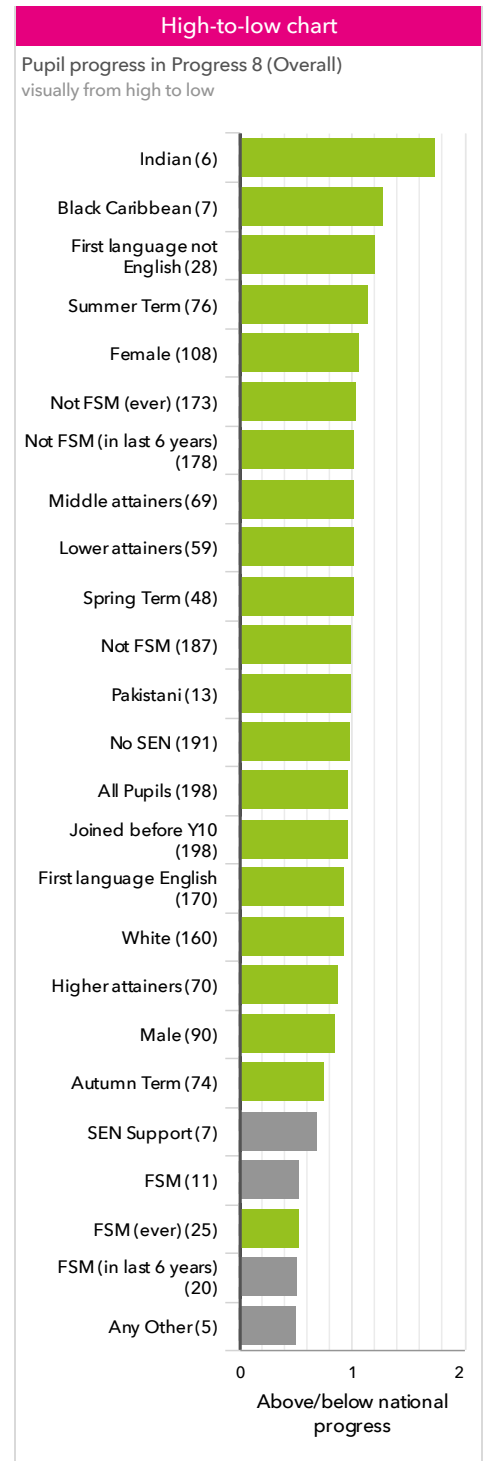
KS4 performance summary

	Actual results			Pupil progress		
	2015	2016	2017	2015	2016	2017
Number of Pupils / % Matched	206	203	199	98%	98%	99%
Attainment / Progress 8 (Overall)	5.0 + ↑	5.2 +	5.8 + ↑	+0.68 + ↑	+0.94 + ↑	+0.98 +
Attainment / Progress 8 (English)	4.7	5.0 +	5.9 + ↑	+0.11	+0.39 + ↑	+0.78 + ↑
Attainment / Progress 8 (Maths)	5.1 + ↑	5.1 +	5.5 + ↑	+0.85 + ↑	+1.00 +	+0.88 +
Attainment / Progress 8 (Ebacc)	4.4 + ↑	4.8 +	5.4 + ↑	+0.74 + ↑	+0.96 +	+1.10 +
Attainment / Progress 8 (Open)	5.6 + ↑	5.9 + ↑	6.2 +	+0.89 + ↑	+1.24 + ↑	+1.05 +
% English & Maths (Grade 4+)	71% +	79% +	81% +	+10% +	+17% +	+15% +
% English & Maths (Grade 5+)	-	-	66% +	-	-	+20% +
% Ebacc (Grade 4+)	26%	29%	32% +	+3%	+7% +	+5%
% Ebacc (Grade 5+)	-	-	32% +	-	-	+7% +
% 5+ GCSEs (Grade 7+)	24% +	27% +	35% +	+11% +	+14% +	+15% +
Average entries per pupil	-	-	10.2 +	-	-	+0.6 +
Average entries per pupil (GCSE only)	-	-	9.3 +	-	-	+0.4 +
% Pupils taking 3 single sciences	-	-	15% -	-	-	-13% -

Pupil groups

KS4 Pupil groups performance 2017

		Pupils	Actual results		Pupil progress	
			Attainment 8 (Overall)	% English & Maths (Grade 4+)	Progress 8 (Overall)	% English & Maths (Grade 4+)
Summary	All Pupils >	199	5.8 + ↑	81% +	+0.98 +	+15% +
Gender	Male >	90	5.6 + ↑	76% +	+0.86 +	+13% +
	Female >	109	5.9 + ↑	85% +	+1.07 +	+16% +
Prior Attainment	Higher attainers >	70	7.2 + ↑	97% +	+0.88 +	+1% +
	Middle attainers >	69	5.6 +	93% +	+1.03 +	+20% +
	Lower attainers >	59	4.2 +	47% +	+1.03 +	+25% +
Pupil Premium	FSM (in last 6 years) >	20	4.9 +	75% +	+0.52	+12% +
	Not FSM (in last 6 years) >	179	5.9 + ↑	82% +	+1.03 +	+15% +
FSM	FSM >	11	4.9 +	82% +	+0.54	+25% +
	Not FSM >	188	5.8 + ↑	81% +	+1.00 +	+14% +
FSM Ever	FSM (ever) >	25	4.9 +	68% +	+0.53 +	+10% +
	Not FSM (ever) >	174	5.9 + ↑	83% +	+1.04 +	+15% +
Term of Birth	Autumn Term >	75	5.7 +	79% +	+0.76 +	+12% +
	Spring Term >	48	5.9 + ↑	81% +	+1.03 +	+12% +
	Summer Term >	76	5.7 + ↑	83% +	+1.15 +	+19% +
SEN Group	SEN Support >	7	3.2	0%	+0.69	-10%
	No SEN >	192	5.9 + ↑	84% +	+0.99 +	+16% +
EAL	First language not English >	28	6.2 +	82% +	+1.21 +	+13%
	First language English >	171	5.7 + ↑	81% +	+0.94 +	+15% +
Mobility	Joined before Y10 >	199	5.8 + ↑	81% +	+0.98 +	+15% +
Ethnicity	White >	160	5.7 + ↑	81% +	+0.93 +	+16% +
	Black Caribbean >	7	5.4	57%	+1.28 +	+2%
	Black African >	1	4.4	100%	-1.39	+10%
	Indian >	6	7.6 + ↑	100%	+1.75 +	+11%
	Pakistani >	13	6.0 + ↑	85%	+1.00 +	+17%
	Bangladeshi >	1	4.2	0%	+0.96	-23%
	Other Asian >	3	5.7	67%	+2.18	+4%
	Chinese >	1	5.6	100%	+1.46	+22%
	Any Other >	5	6.0	80%	+0.51	-1%
	Unknown >	2	6.9	100%	+1.82	+34%

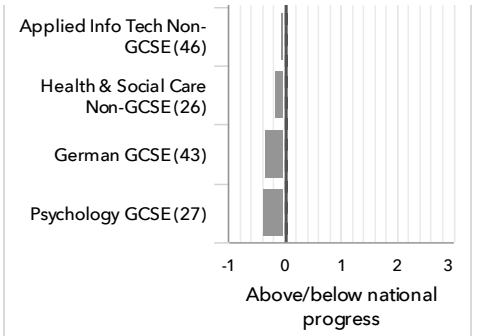


Subjects

KS4 subject performance 2017

		Pupils	Actual results			Pupil progress			High-to-low chart
			Avg Point Score	% Grade 4+	% Grade 7+	Avg Point Score	% Grade 4+	% Grade 7+	
English and maths	English Language GCSE ›	199	5.4 + ↑	86% +	26% + ↑	+0.47 + ↑	+12% + ↑	+5%	<p>Pupil progress in Avg Point Score visually from high to low</p>
	English Literature GCSE ›	199	5.5 + ↑	85% +	28% + ↑	+0.52 +	+9% + ↑	+5%	
	Mathematics GCSE ›	199	5.5 + ↑	85% +	33% +	+0.85 +	+15% + ↑	+12% +	
Ebacc Subjects	Biology GCSE ›	29	7.9 + ↑	100%	100% + ↑	+1.23 +	+0%	+35% +	
	Chemistry GCSE ›	29	8.4 + ↑	100%	100% +	+1.75 + ↑	+0%	+37% +	
	Com.Stds/Computing GCSE ›	11	4.7 ↓	82%	18%	+0.51	+5%	+1%	
	French GCSE ›	41	5.4 +	78%	37% +	-0.00	-18% −	+3%	
	Geography GCSE ›	102	5.8 + ↑	90% +	42% + ↑	+0.78 +	+3%	+11% +	
	German GCSE ›	43	4.8	81%	23%	-0.32	-14% −	-5%	
	History GCSE ›	93	5.5 +	81% + ↓	39% +	+0.81 +	+0%	+11% +	
	Physics GCSE ›	29	8.4 + ↑	100%	100% +	+1.67 +	+0%	+35% +	
	Polish GCSE ›	5	8.2	100%	100%	+0.63	+1%	+12%	
	Science SA GCSE ›	170	5.0 + ↑	82% +	28% + ↑	+1.18 + ↑	+3%	+20% + ↑	
	Science: Additional GCSE ›	170	5.3 + ↑	86% + ↑	31% + ↑	+1.29 + ↑	+6%	+21% + ↑	
Urdu GCSE ›	1	3.0	0%	0%	-3.20	-97%	-53%		
Other High Value Subjects	Applied Info Tech Non-GCSE ›	46	6.8 ↑	100%	63% ↑	-0.04	+2%	-4%	
	Art & Design Non-GCSE ›	48	5.2 +	92% +	31% +	+0.43	+10%	+6%	
	Business Studies:Single GCSE ›	78	4.9 +	74% +	26% +	+0.57 +	-6%	+7%	
	Catering Studies Non-GCSE ›	40	4.6	70%	15%	+0.55 +	-10%	+2%	
	Childcare Skills Non-GCSE ›	16	5.3	94%	19%	+0.96 +	+14%	+5%	
	D&T Product Design GCSE ›	25	5.9 +	100% +	32% +	+1.58 +	+16% +	+16% +	
	Drama GCSE ›	28	4.9	82%	25%	+0.31	-7%	+6%	
	Engineering Studies Non-GCSE ›	35	7.0 +	100% +	83% +	+2.18 + ↓	+15% +	+61% +	
	Health & Social Care Non-GCSE ›	26	4.2	58%	23%	-0.15	-21% −	+6%	
	Home Economics: Child Development GCSE ›	23	4.6 +	70%	22%	+0.31	-14%	+5%	
	Information Technology GCSE ›	19	5.7 +	100% +	37%	+0.95 + ↓	+15%	+13%	
	Media/Film/Tv Studies GCSE ›	18	4.3	67%	6%	-0.03	-12%	-16%	
	Music GCSE ›	18	5.6	78%	44%	+0.48	-7%	+10%	

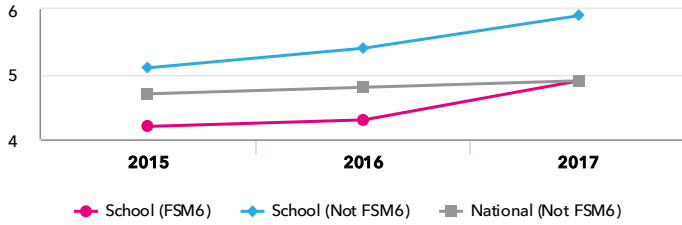
Pupils	Actual results			Pupil progress			
	Avg Point Score	% Grade 4+	% Grade 7+	Avg Point Score	% Grade 4+	% Grade 7+	
Physical Education/Sport Studies GCSE ›	32	6.2 +	97% +	53% +	+1.49 +	+6%	+33% +
Physical Education/Sport Studies Non-GCSE ›	11	4.9	91%	18%	+0.72	+10%	+7%
Psychology GCSE ›	27	4.4	59%	19%	-0.36 ↓	-24% -	-8%
Religious Studies GCSE ›	197	5.9 +	86% +	47% +	+1.14 +	+3%	+18% +
Small Business Non-GCSE ›	11	4.6 ↑	91%	0%	+0.72	+15%	-10%



Disadvantaged pupils

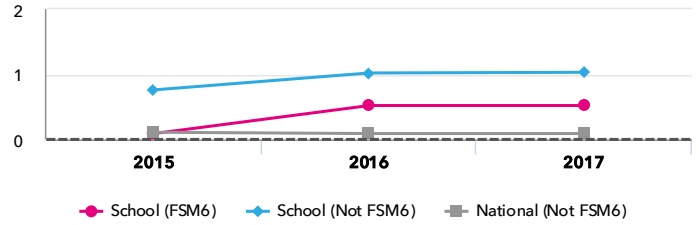
KS4 attainment for disadvantaged pupils 2017

Attainment 8 (Overall)



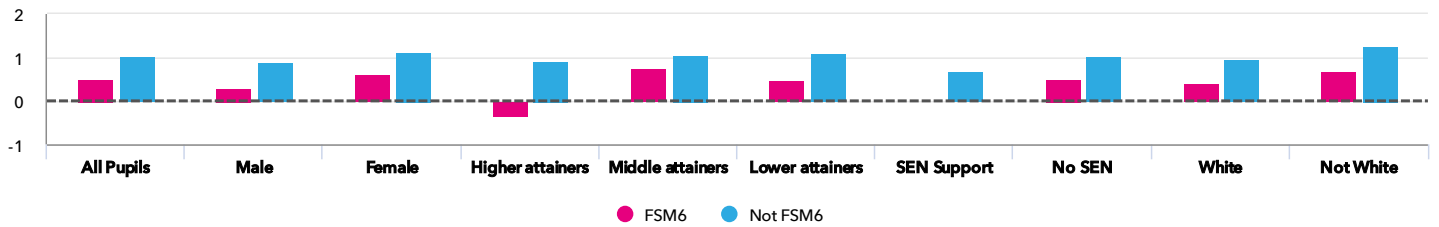
KS4 progress for disadvantaged pupils 2017

Progress 8 (Overall)



Progress gap

Progress 8 (Overall)

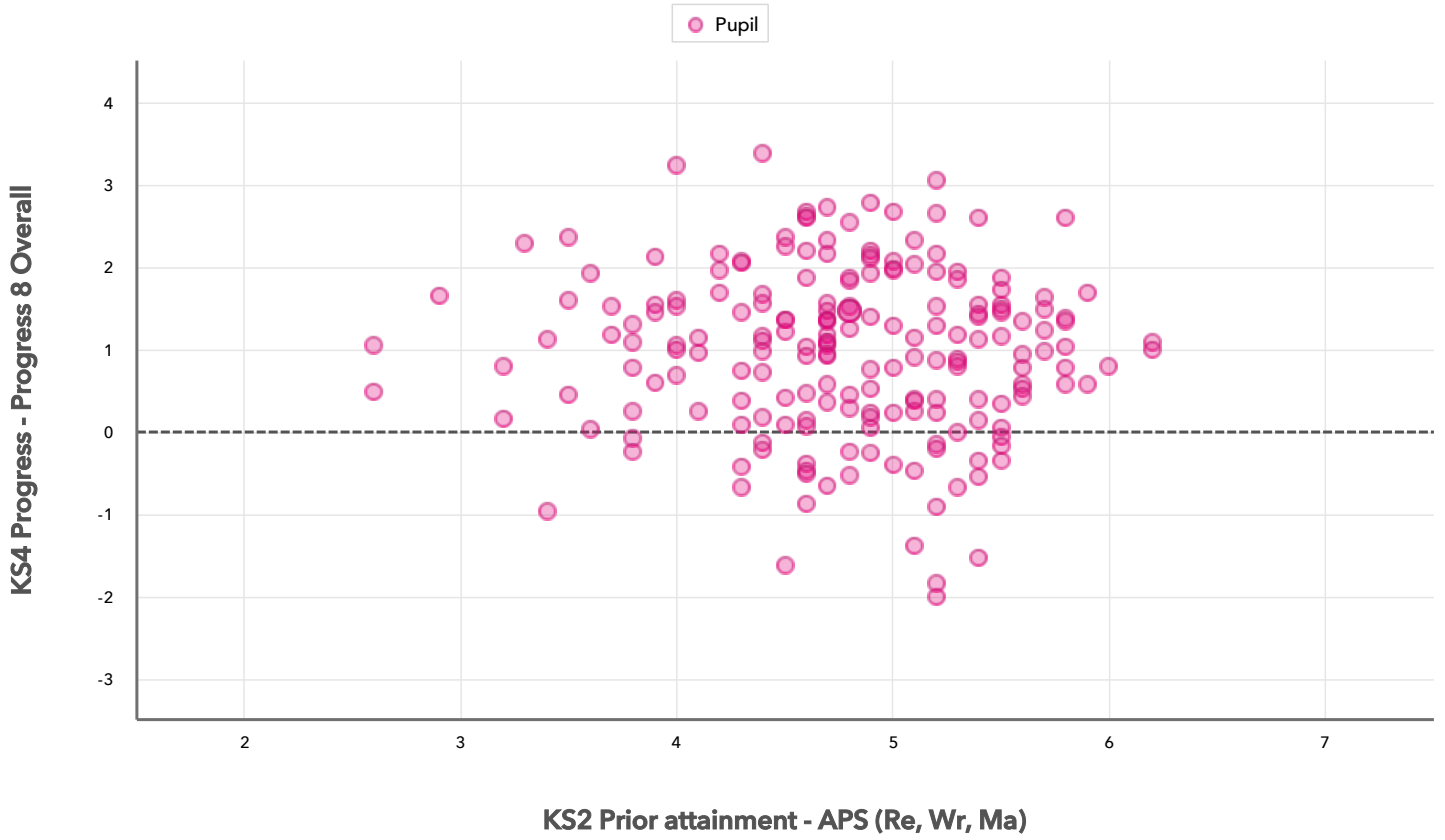


Attainment & progress

Pupils	Attainment			Progress					
	Attainment 8 (Overall)			Progress 8 (Overall)					
	FSM6	Not FSM6	Gap	FSM6	Not FSM6	Gap			
Summary	All Pupils	20	179	4.9 ⁺	5.9 ⁺ ↑	-1	0.52	1.03 ⁺	-0.51
Gender	Male	7	83	5	5.6	-0.6	0.3	0.91	-0.61
	Female	13	96	4.9	6.1	-1.2	0.63	1.13	-0.5
Prior Attainment	Higher attainers	3	67	5.9	7.3	-1.4	-0.33	0.93	-1.26
	Middle attainers	11	58	5.4	5.7	-0.3	0.77	1.08	-0.31
	Lower attainers	6	53	3.7	4.2	-0.5	0.47	1.09	-0.62
SEN Group	SEN Support	-	7	-	3.2	-	-	0.69	-
	No SEN	20	172	4.9	6	-1.1	0.52	1.04	-0.52
Ethnic Group	White	13	147	4.8	5.8	-1	0.42	0.98	-0.56
	Not White	7	32	5.1	6.3	-1.2	0.69	1.26	-0.57

Scatterplot

KS4 Pupil scatterplot 2017 199 pupils highlighted by All pupils ▼



Context

Context · Year 11 · 2016 / 2017

Absence · Year 11 · Autumn 2013 - Summer 2016

		Pupils	Proportion	
			School	National
Summary	All Pupils	199	100%	100%
Gender	Male	90	45%	51%
	Female	109	55%	49%
Prior Attainment	Higher attainers	70	35%	31%
	Middle attainers	69	35%	33%
	Lower attainers	59	30%	31%
Pupil Premium	FSM (in last 6 years)	20	10%	27%
	Not FSM (in last 6 years)	179	90%	73%
FSM	FSM	11	6%	13%
	Not FSM	188	94%	87%
FSM Ever	FSM (ever)	25	13%	34%
	Not FSM (ever)	174	87%	66%
Term of Birth	Autumn Term	75	38%	34%
	Spring Term	48	24%	32%
	Summer Term	76	38%	34%
SEN Group	SEN Support	7	4%	11%
	No SEN	192	96%	85%
EAL	First language not English	28	14%	16%
	First language English	171	86%	84%
Mobility	Joined before Y10	199	100%	96%
Ethnicity	White	160	80%	77%
	Black Caribbean	7	4%	3%
	Black African	1	1%	4%
	Indian	6	3%	3%
	Pakistani	13	7%	4%
	Bangladeshi	1	1%	2%
	Other Asian	3	2%	3%
	Chinese	1	1%	0%
	Any Other	5	3%	3%
	Unknown	2	1%	1%

		Pupils	Absence		Persistent absentees	
			School	National	School	National
Summary	All Pupils	199	4%	6%	5%	14%
Gender	Male	90	3%	6%	3%	14%
	Female	109	4%	6%	6%	15%
Prior Attainment	Higher attainers	70	3%	4%	1%	8%
	Middle attainers	69	4%	6%	7%	14%
	Lower attainers	59	4%	8%	7%	22%
Pupil Premium	FSM (in last 6 years)	20	6%	9%	15%	27%
	Not FSM (in last 6 years)	179	3%	5%	4%	10%
FSM	FSM	11	7%	10%	18%	31%
	Not FSM	188	3%	5%	4%	12%
FSM Ever	FSM (ever)	25	6%	9%	12%	25%
	Not FSM (ever)	174	3%	5%	4%	9%
Term of Birth	Autumn Term	75	4%	6%	7%	15%
	Spring Term	48	3%	6%	4%	14%
	Summer Term	76	3%	6%	4%	14%
SEN Group	SEN Support	7	6%	10%	14%	29%
	No SEN	192	4%	5%	5%	12%
EAL	First language not English	28	3%	5%	0%	11%
	First language English	171	4%	6%	6%	15%
Mobility	Joined before Y10	199	4%	6%	5%	13%
Ethnicity	White	160	3%	6%	6%	15%
	Black Caribbean	7	5%	7%	0%	19%
	Black African	1	9%	4%	0%	7%
	Indian	6	2%	4%	0%	6%
	Pakistani	13	4%	6%	0%	12%
	Bangladeshi	1	7%	5%	0%	9%
	Other Asian	3	1%	5%	0%	10%
	Chinese	1	0%	3%	0%	3%
	Any Other	5	6%	6%	20%	13%
	Unknown	2	2%	7%	0%	19%